

**Paper Reference(s)    4PH1/1P    4SD0/1P**  
**Pearson Edexcel International GCSE (9–1)**

**Physics**  
**UNIT: 4PH1**  
**Science (Double Award) 4SD0**  
**PAPER: 1P**

**Wednesday 22 May 2024 – Morning**  
**Time: 2 hours**

**Diagram Booklet**

**THIS DIAGRAM BOOKLET MUST BE  
RETURNED WITH THE QUESTION PAPER  
AT THE END OF THE EXAMINATION.**

**In the boxes below, write your name, centre  
number and candidate number.**

<b>Surname</b>					
<b>Other names</b>					
<b>Centre Number</b>					
<b>Candidate Number</b>					

# **INSTRUCTIONS**

**There may be spare copies of some diagrams in case you need them.**

## **CONTENTS**

### **Page**

<b>4</b>	<b>Question 1(a) – Blank</b>
<b>5</b>	<b>Question 3</b>
<b>6</b>	<b>Question 4(a)</b>
<b>7</b>	<b>Question 5(a)</b>
<b>8</b>	<b>Question 5(b)</b>
<b>9</b>	<b>Question 5(b)(i)</b>
<b>10</b>	<b>Question 6</b>
<b>11</b>	<b>Question 6(d)</b>
<b>12</b>	<b>Question 7</b>
<b>13</b>	<b>Question 8</b>
<b>14</b>	<b>Question 9(a)</b>
<b>15</b>	<b>Question 9(b)</b>

**(continued on the next page)**

## **CONTENTS continued.**

**16 Question 10**

**17 Question 10(c)**

**18 Question 10(c)(i)**

**19 Question 10(c)(ii)**

**20 Question 11**

**21 Question 11(c)**

**22 Question 12**

### **Spare Copies**

**23 Question 1(a) – Blank**

**24 Question 4(a)**

**25 Question 5(a)**

**26 Question 6**

**27 Question 6(d)**

**28 Question 8**

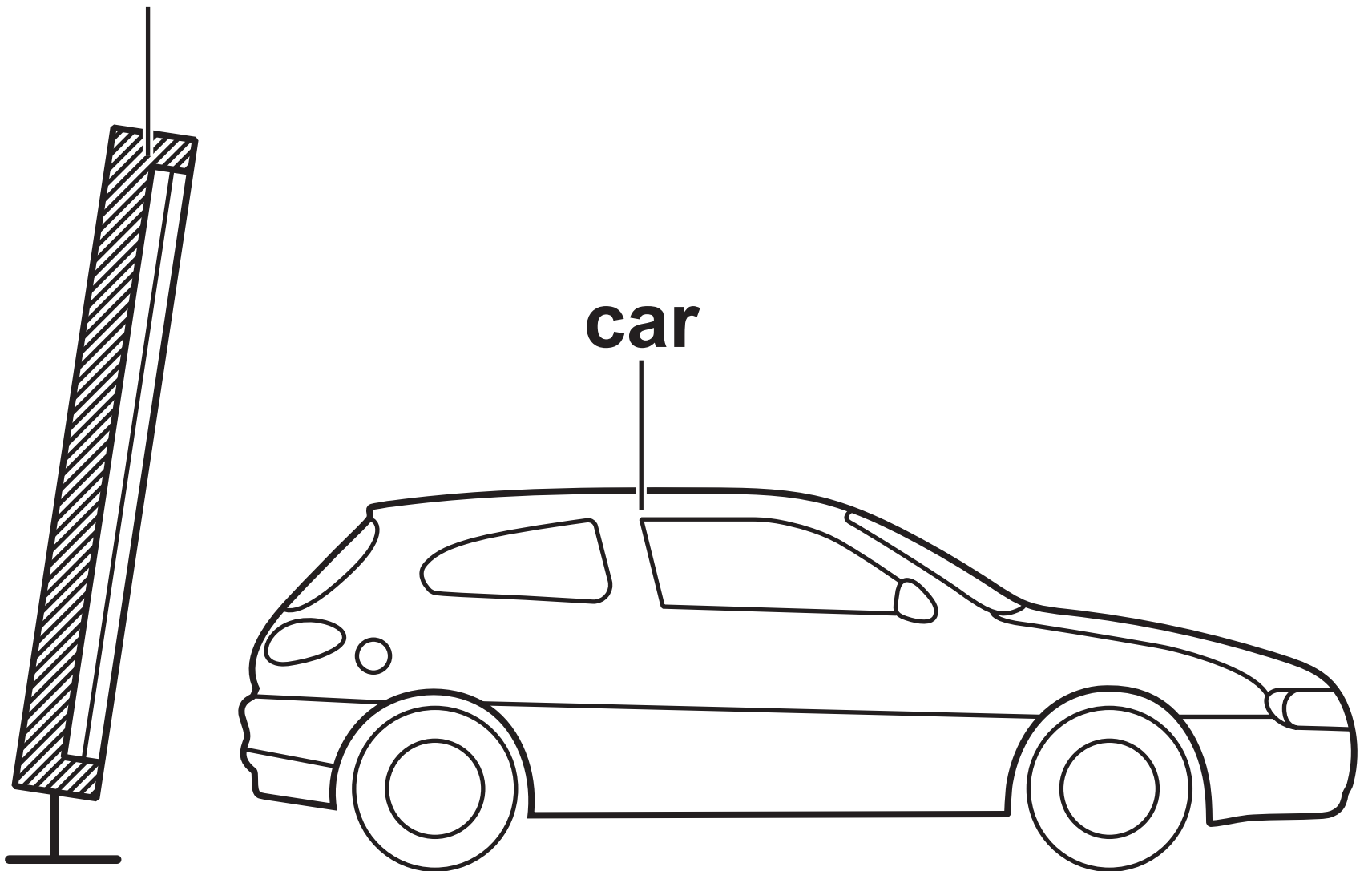
**29 Question 10(c)(ii)**

**30 Question 12**

## Question 1(a) – Blank

## Question 3

**infrared heating lamps**



Question 4(a)

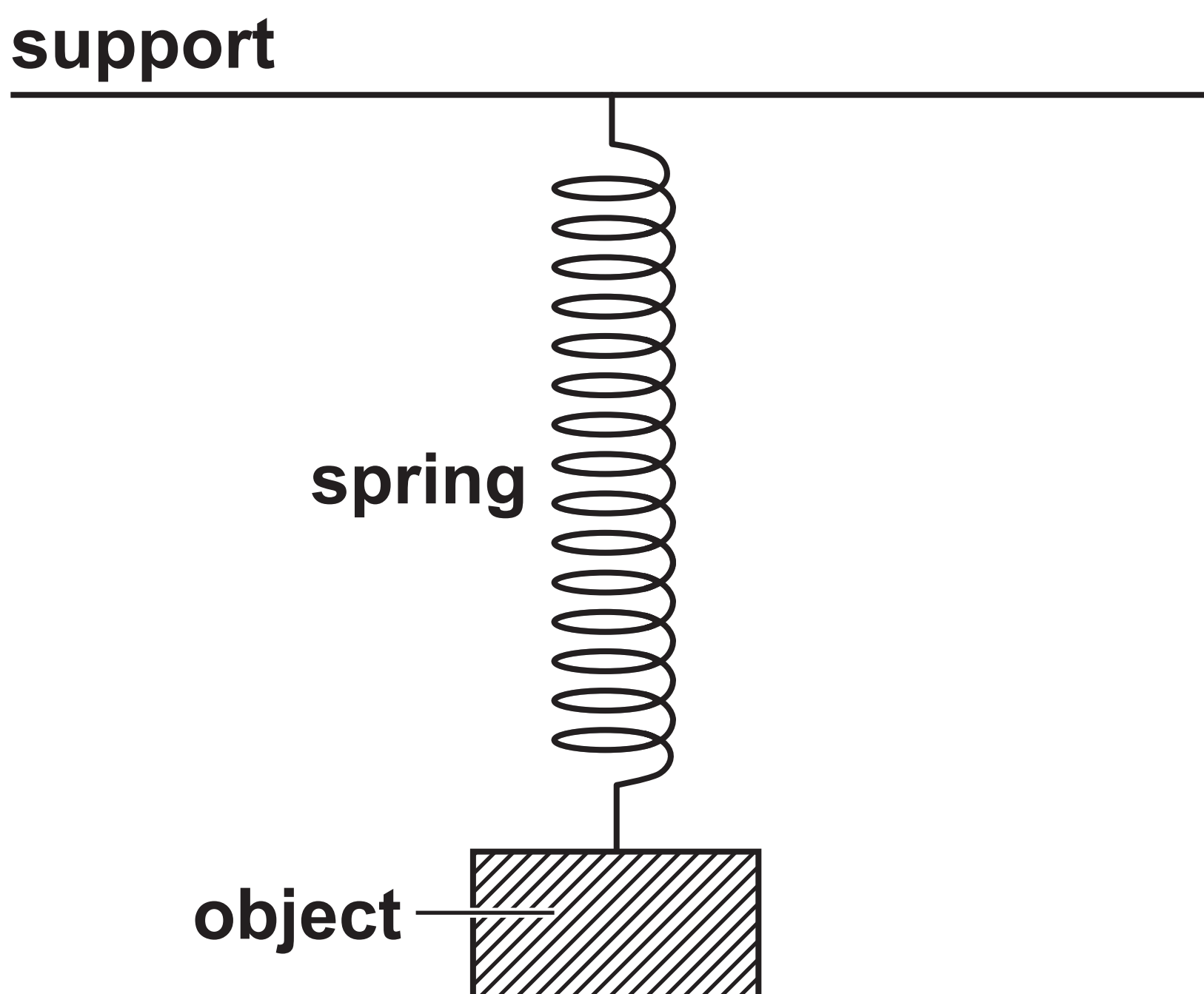
Energy store	Increases	Decreases	Stays the same
chemical			
gravitational potential			
nuclear			
thermal			

## Question 5(a)



## Question 5(b)

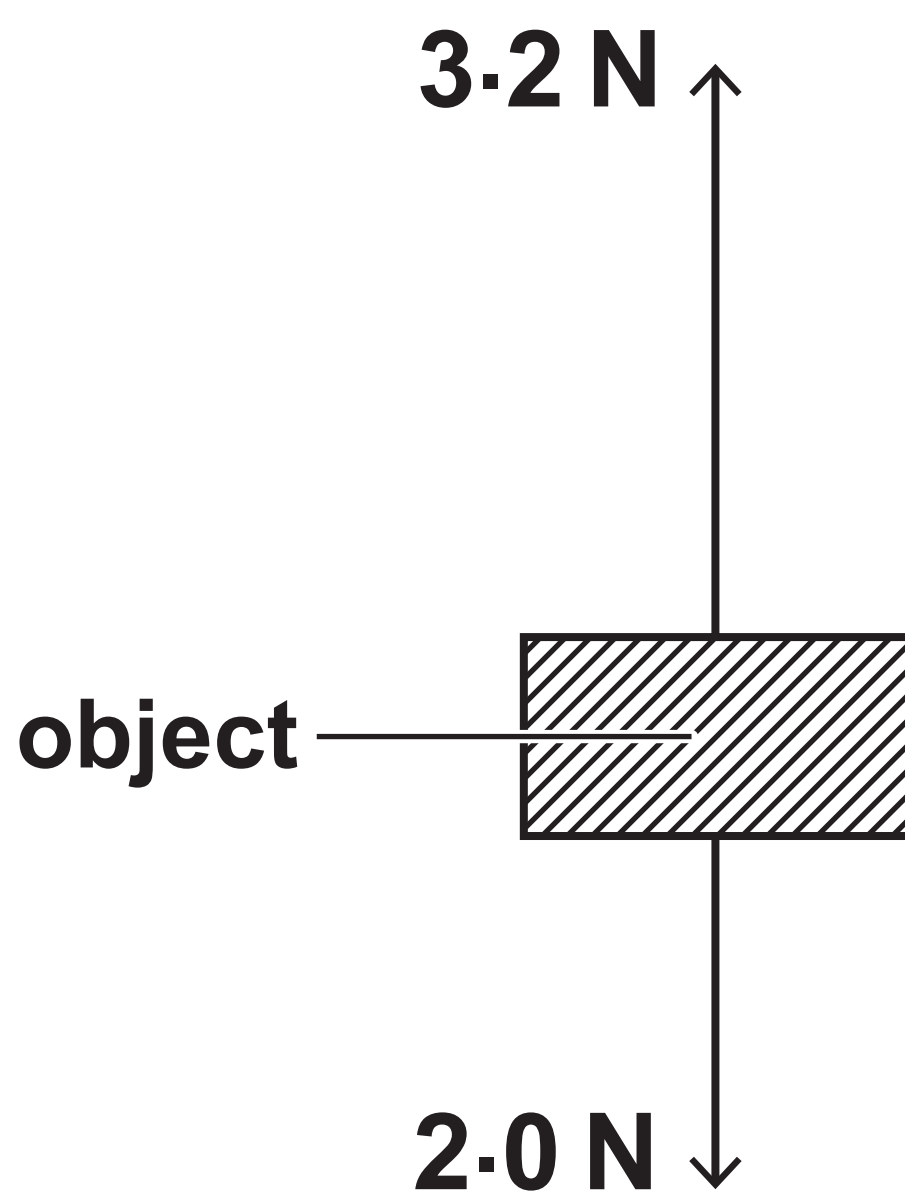
**DIAGRAM 1**





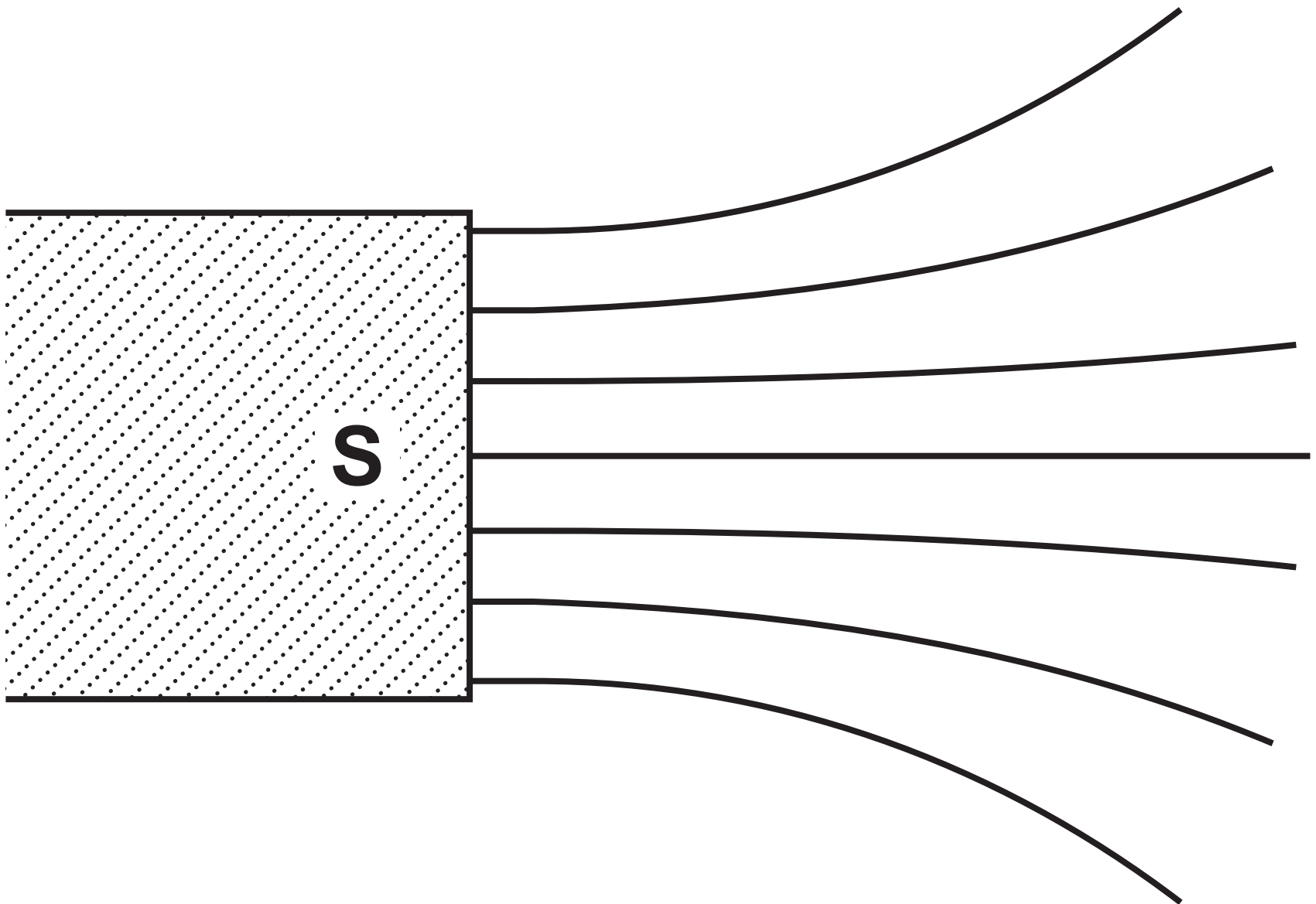
# Question 5(b)(i)

**DIAGRAM 2**



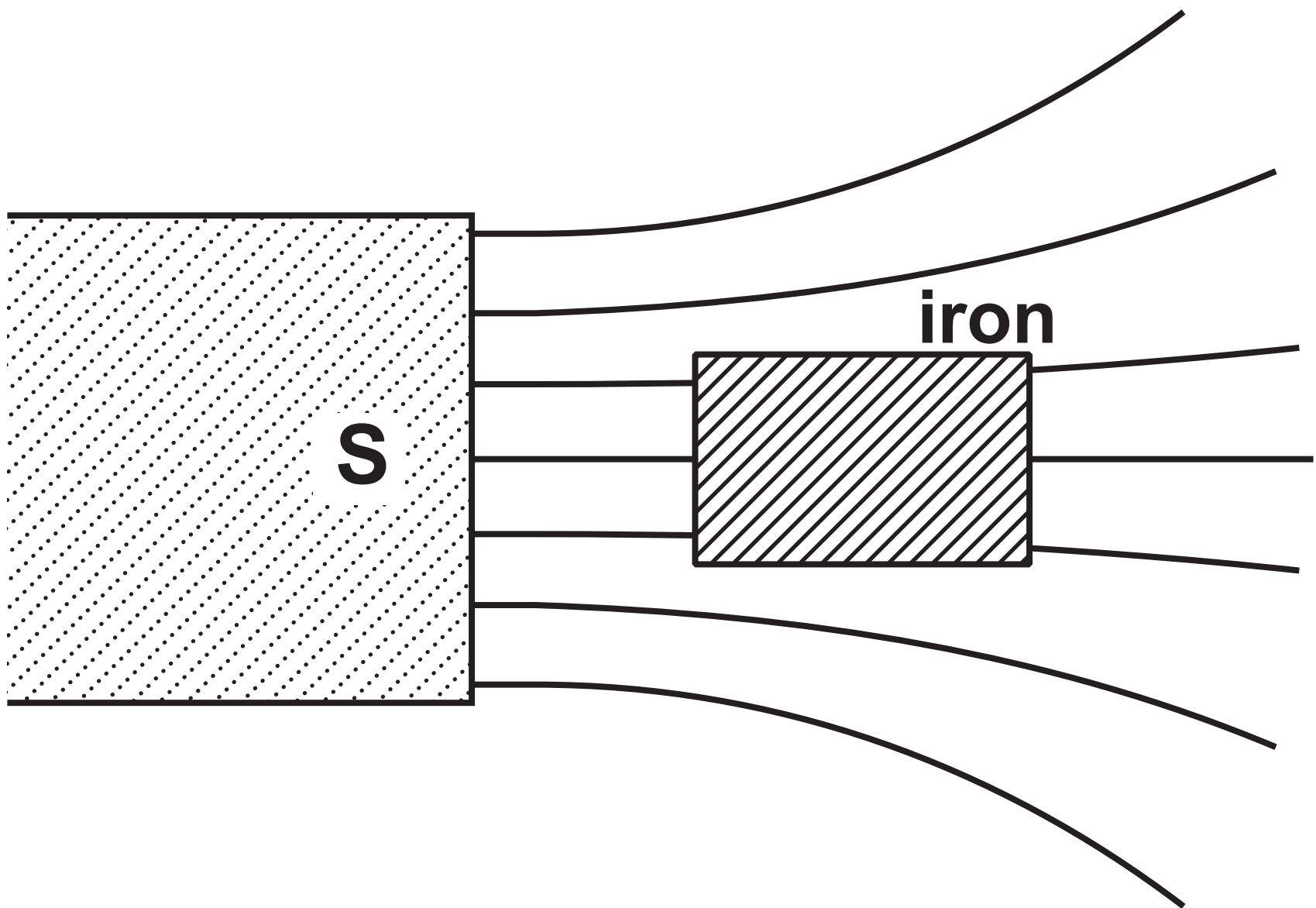
## Question 6

**DIAGRAM 1**

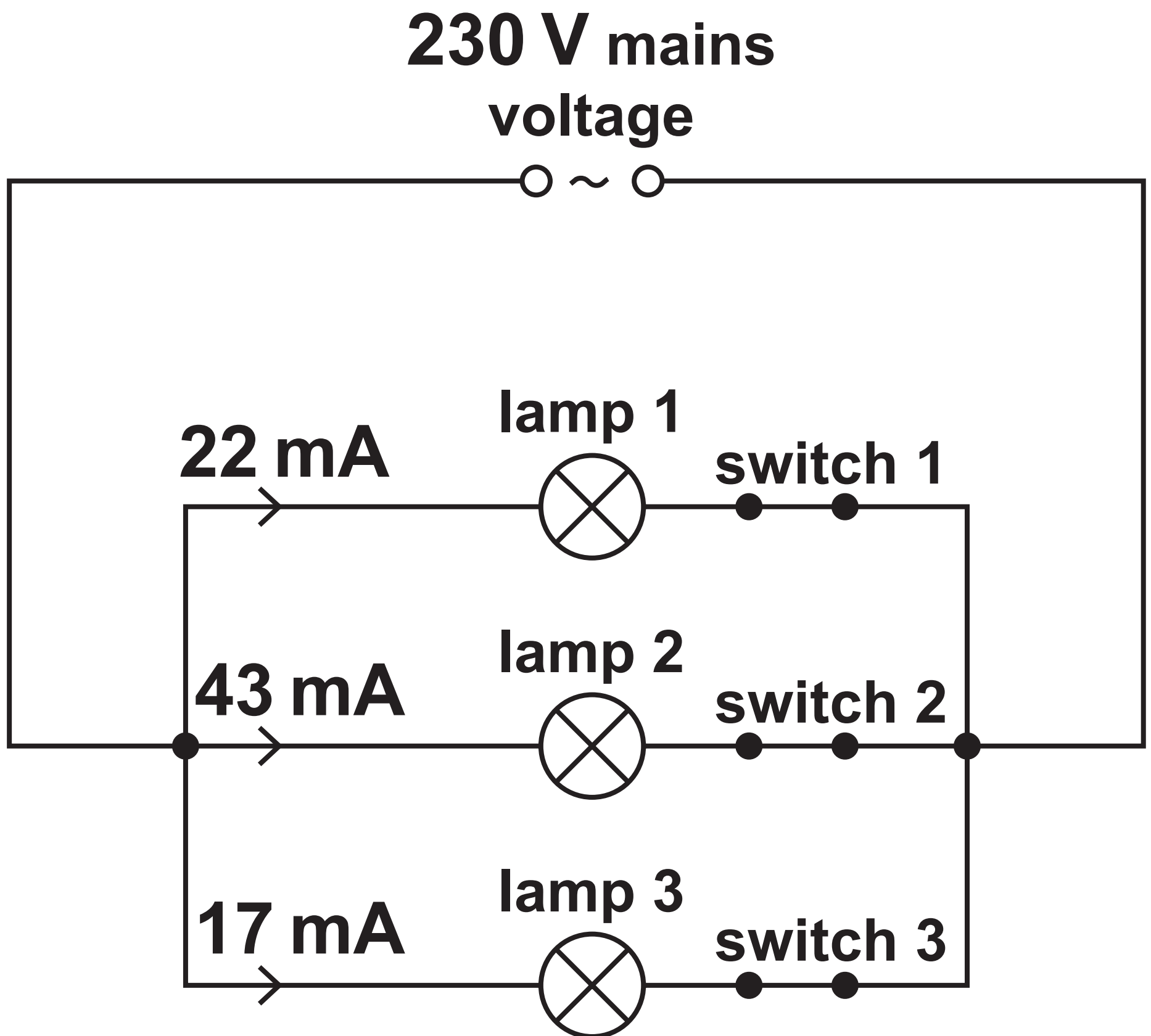


## Question 6(d)

**DIAGRAM 2**



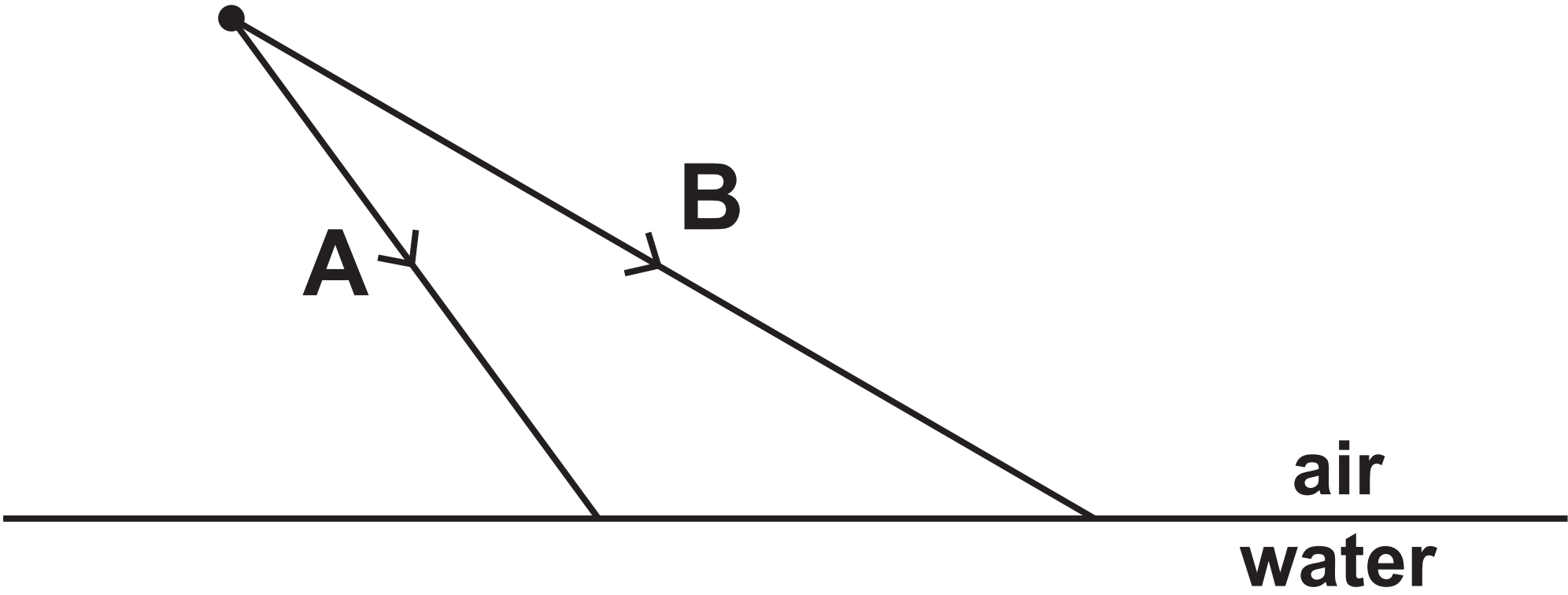
## Question 7



Question 8

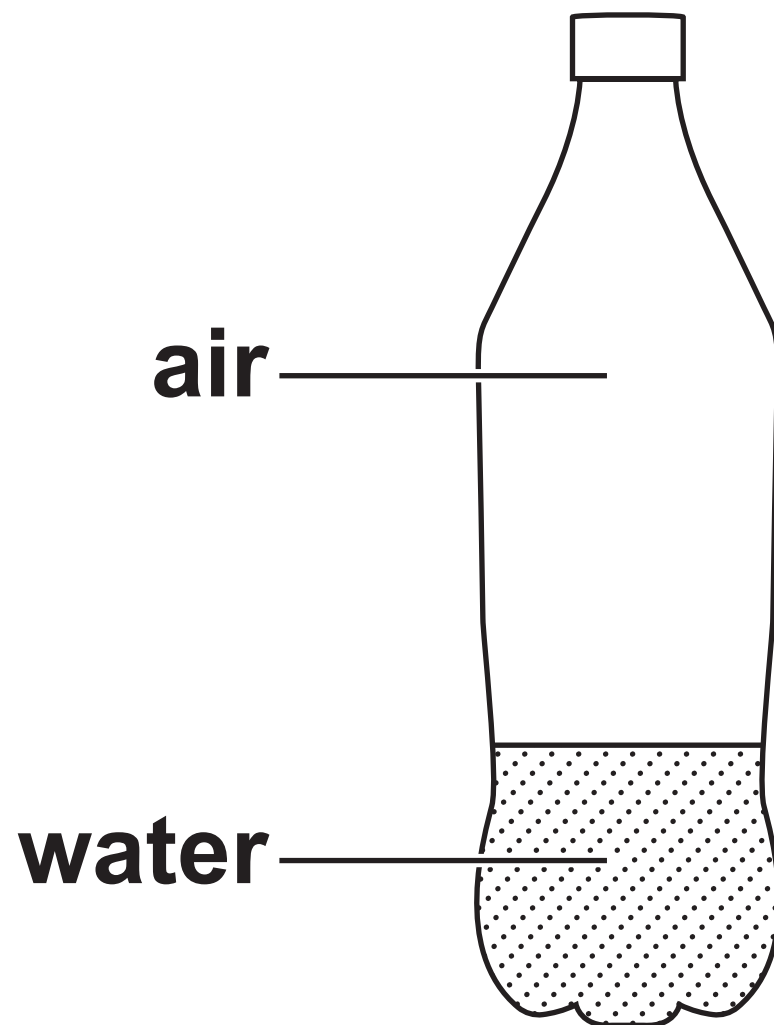
drawn to  
scale

light source



## Question 9(a)

### DIAGRAM 1



## Question 9(b)

### DIAGRAM 2

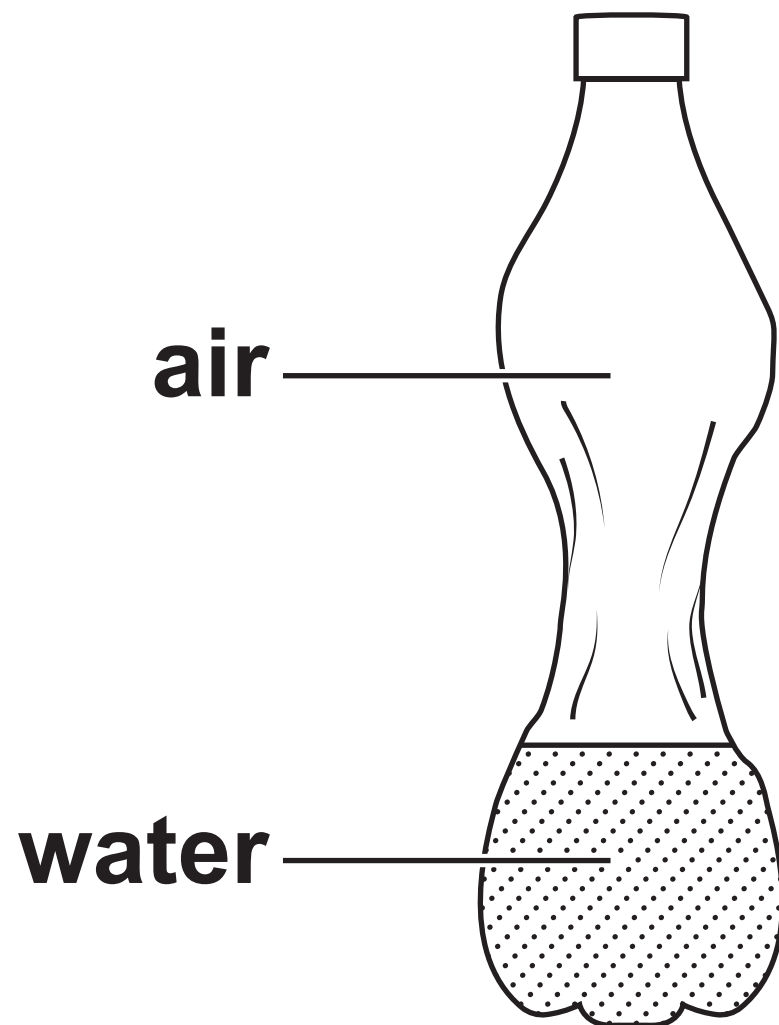
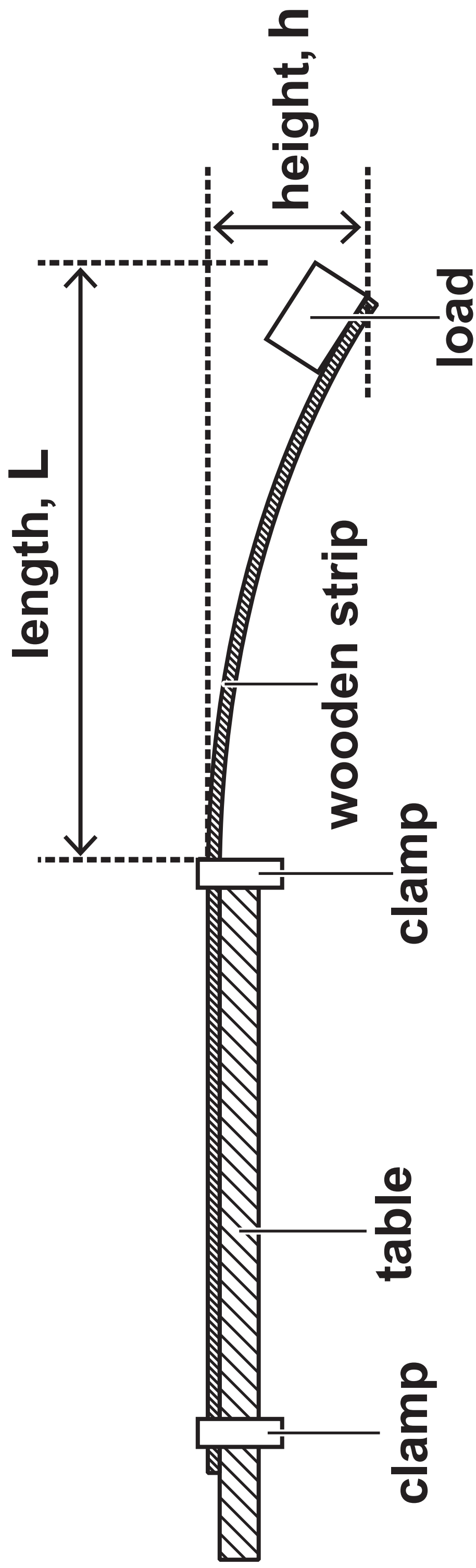


DIAGRAM 1

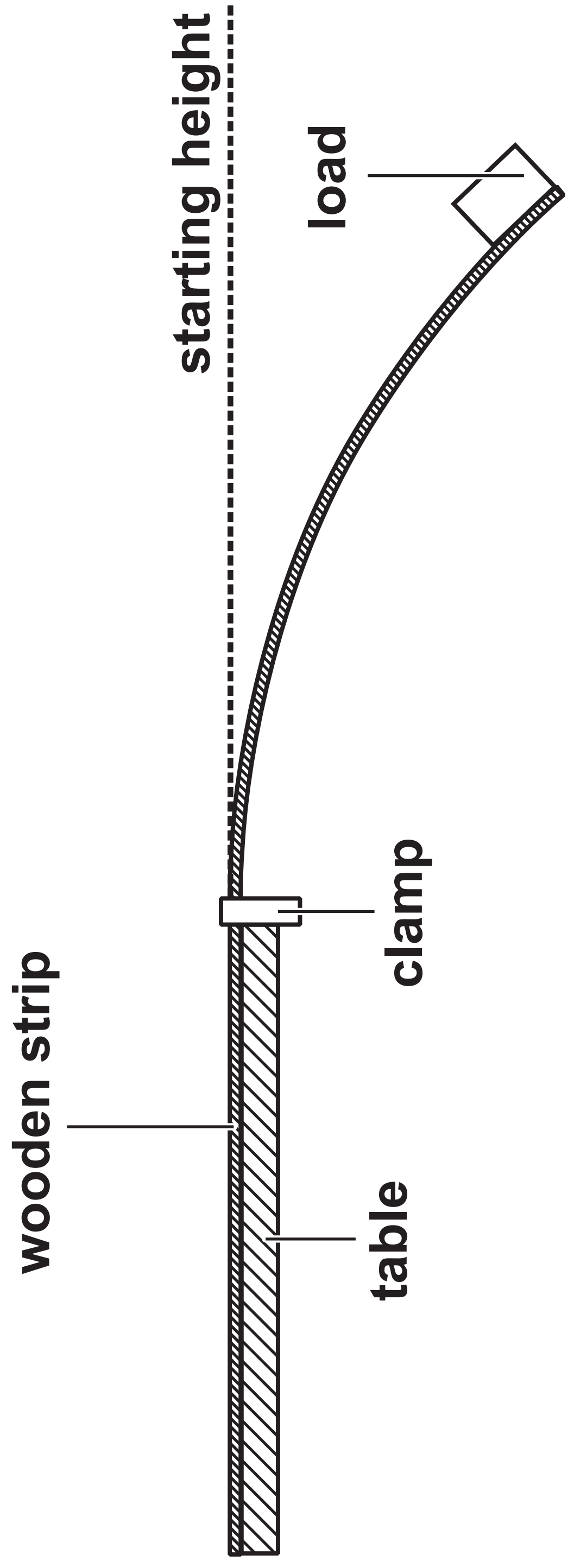




Question 10(c)

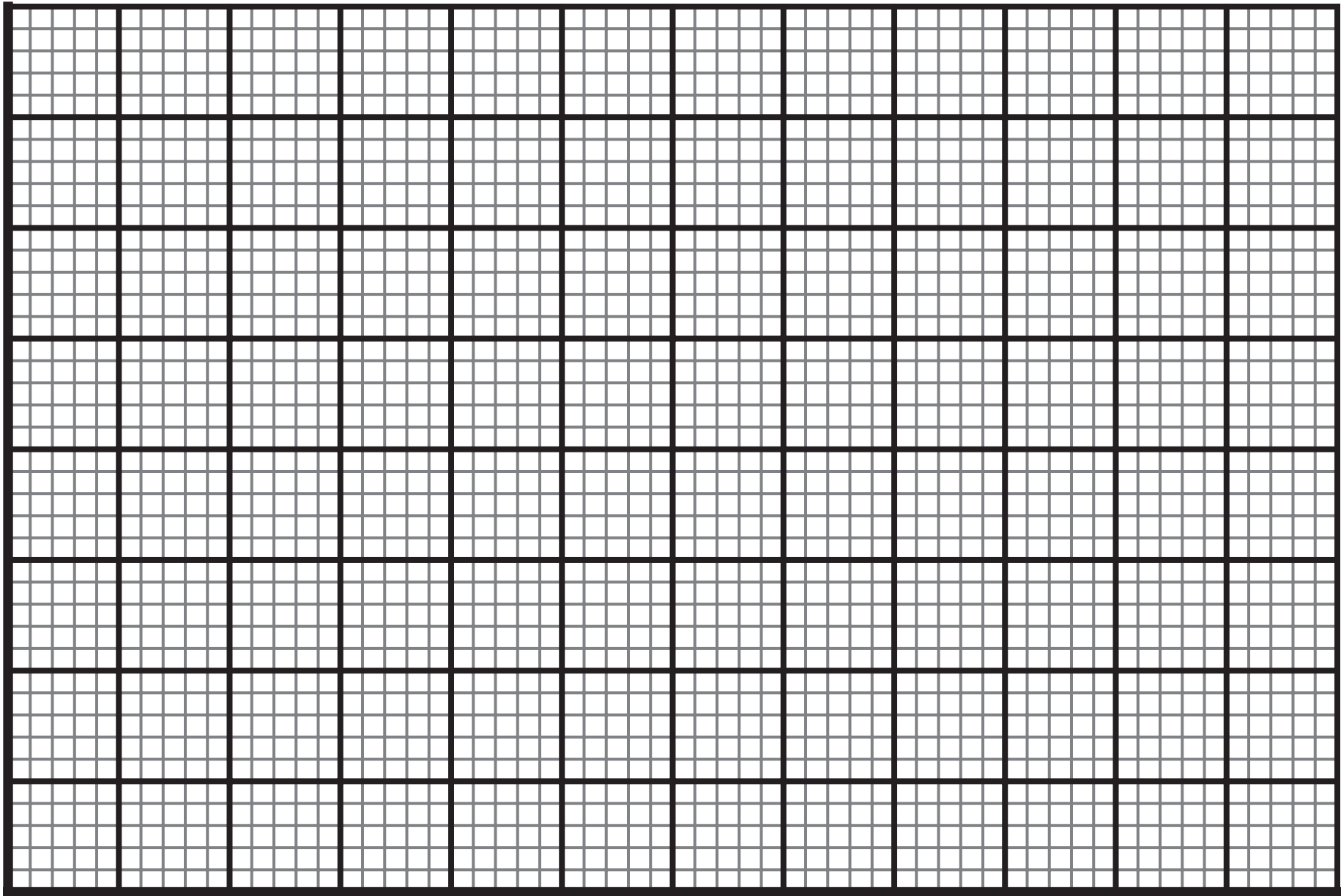
Length (L) in cm	Height (h) in cm
20	2
40	8
60	18
80	
100	53
120	71

DIAGRAM 2



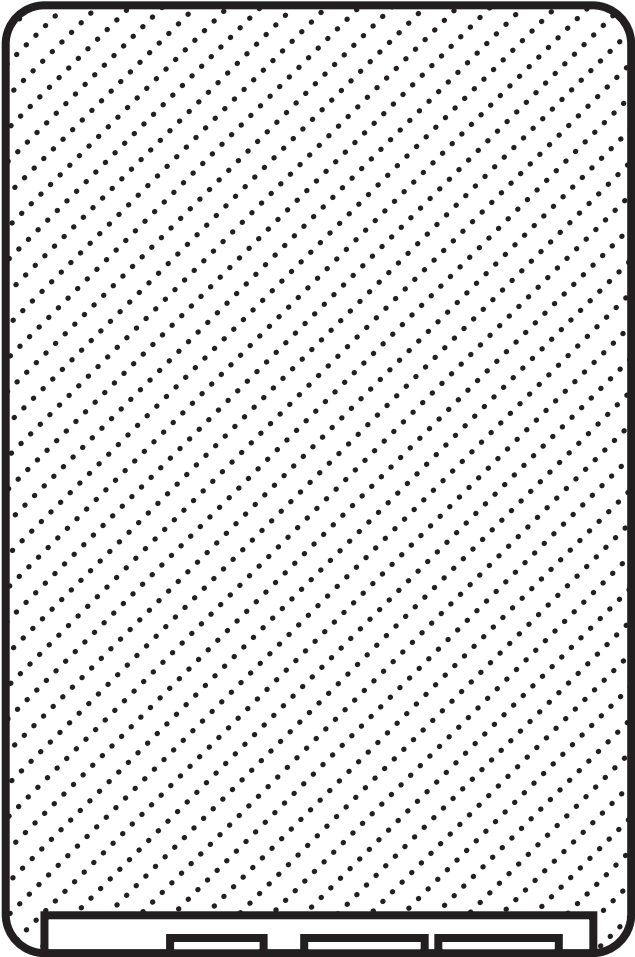
Question 10(c)(ii)

Height (h) in cm



Length (L) in cm

Question 11



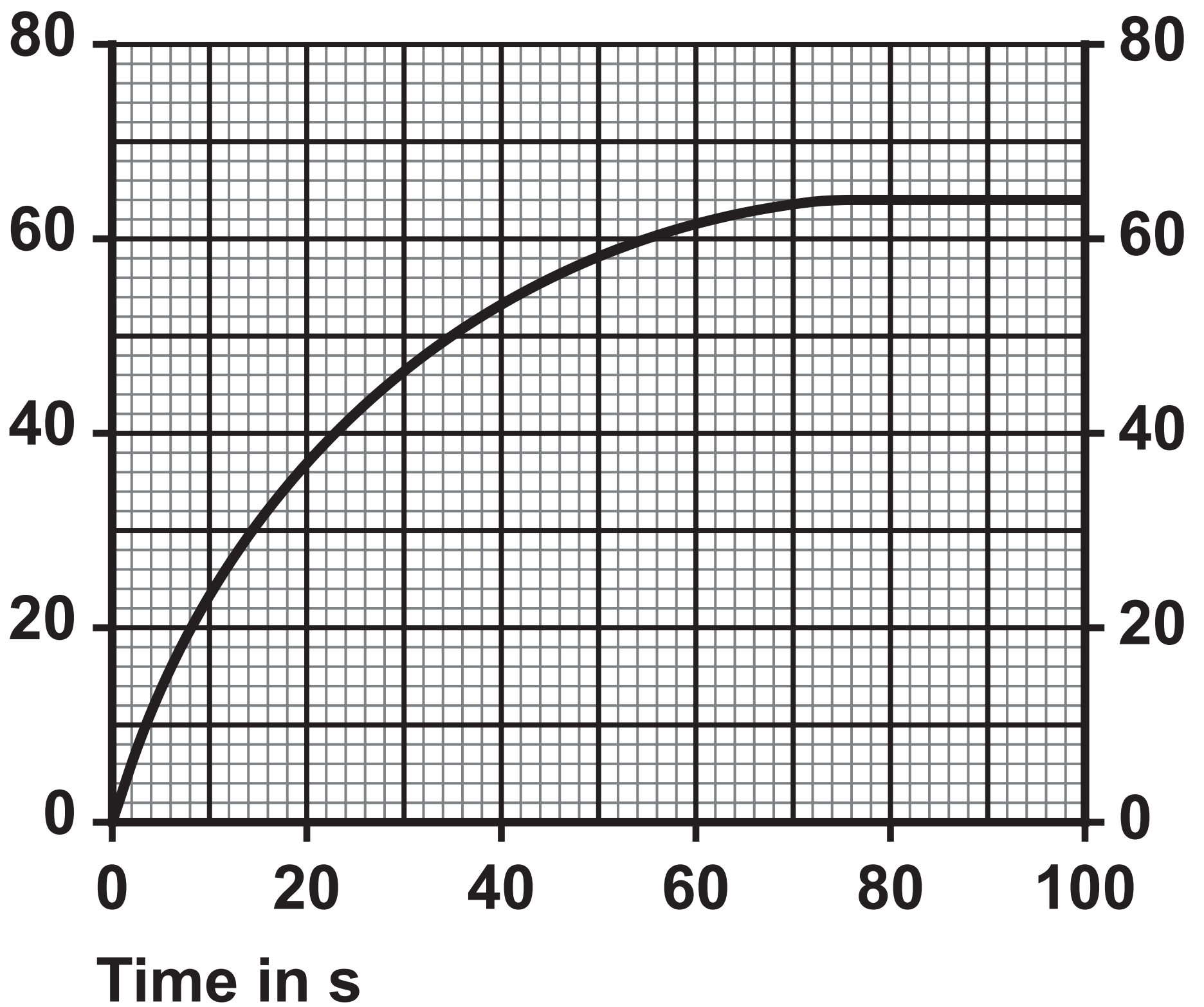
## Question 11(c)

21

Electronic device	Charge stored in Ah	Frequency of recharging
A	2·4	once every day
B	4·2	once during the week
C	6·8	once during the week

## Question 12

Velocity in m / s



## Question 1(a) – Blank

Question 4(a)

Energy store	Increases	Decreases	Stays the same
chemical			
gravitational potential			
nuclear			
thermal			

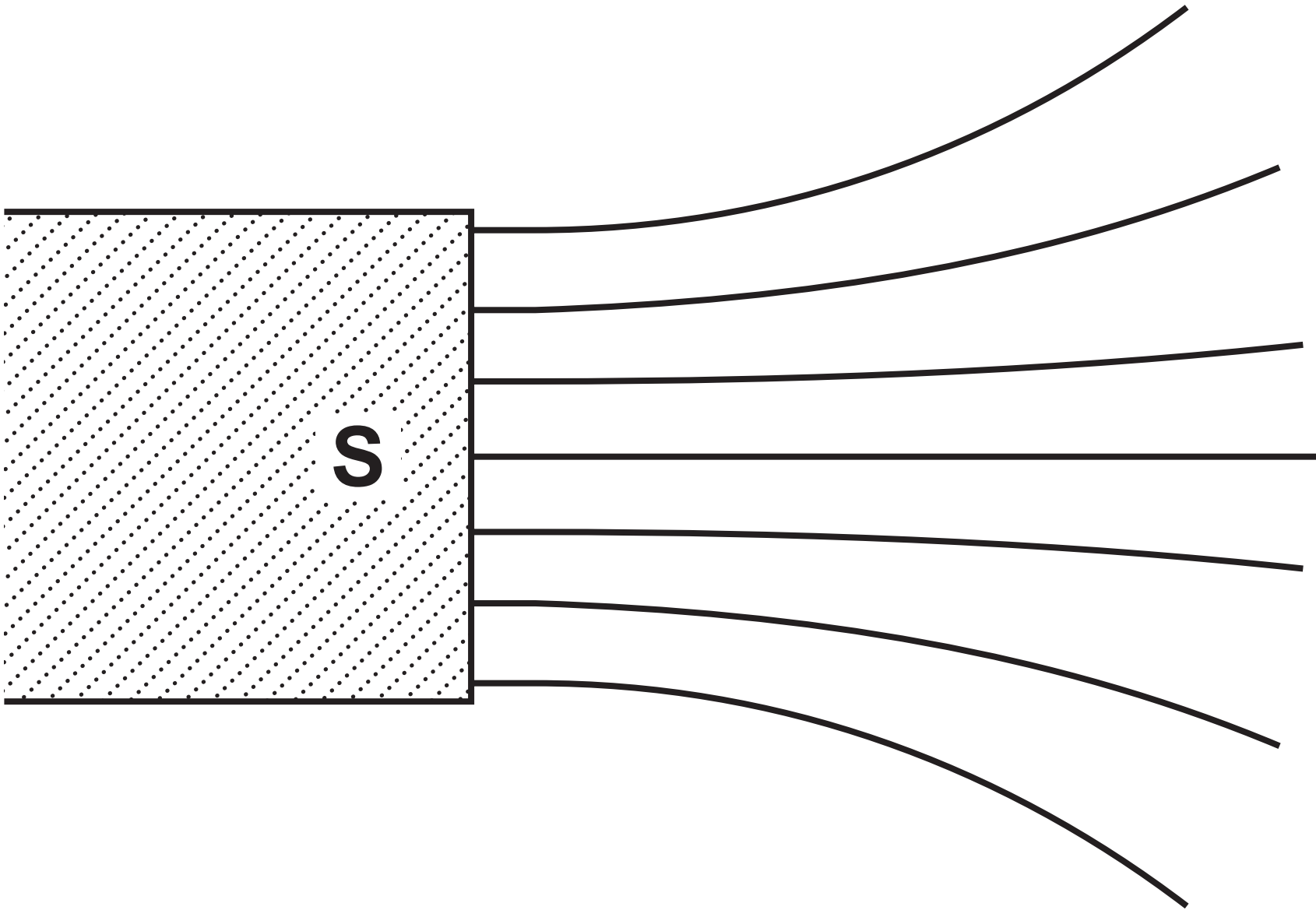


Question 5(a)



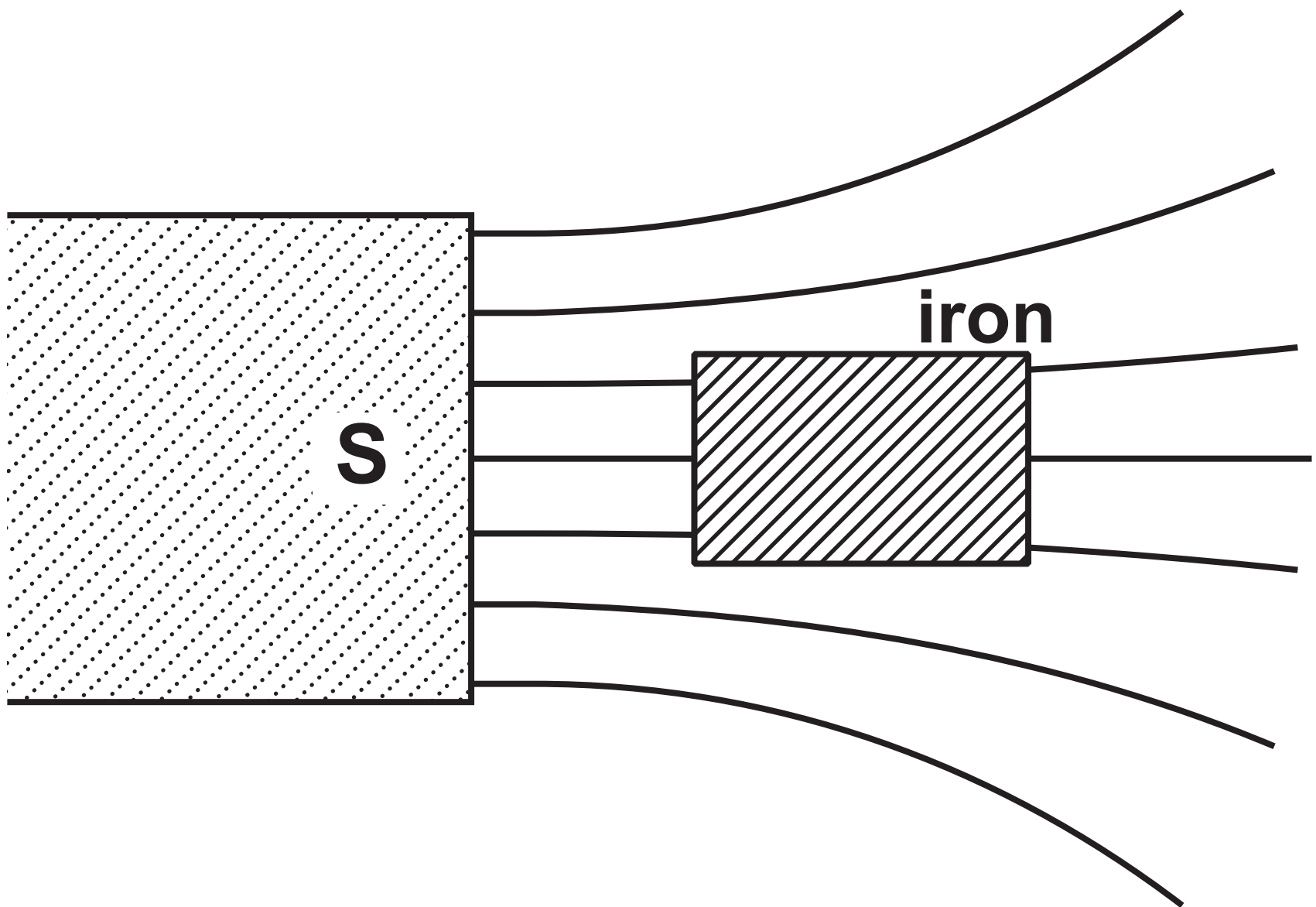
Question 6

DIAGRAM 1



## Question 6(d)

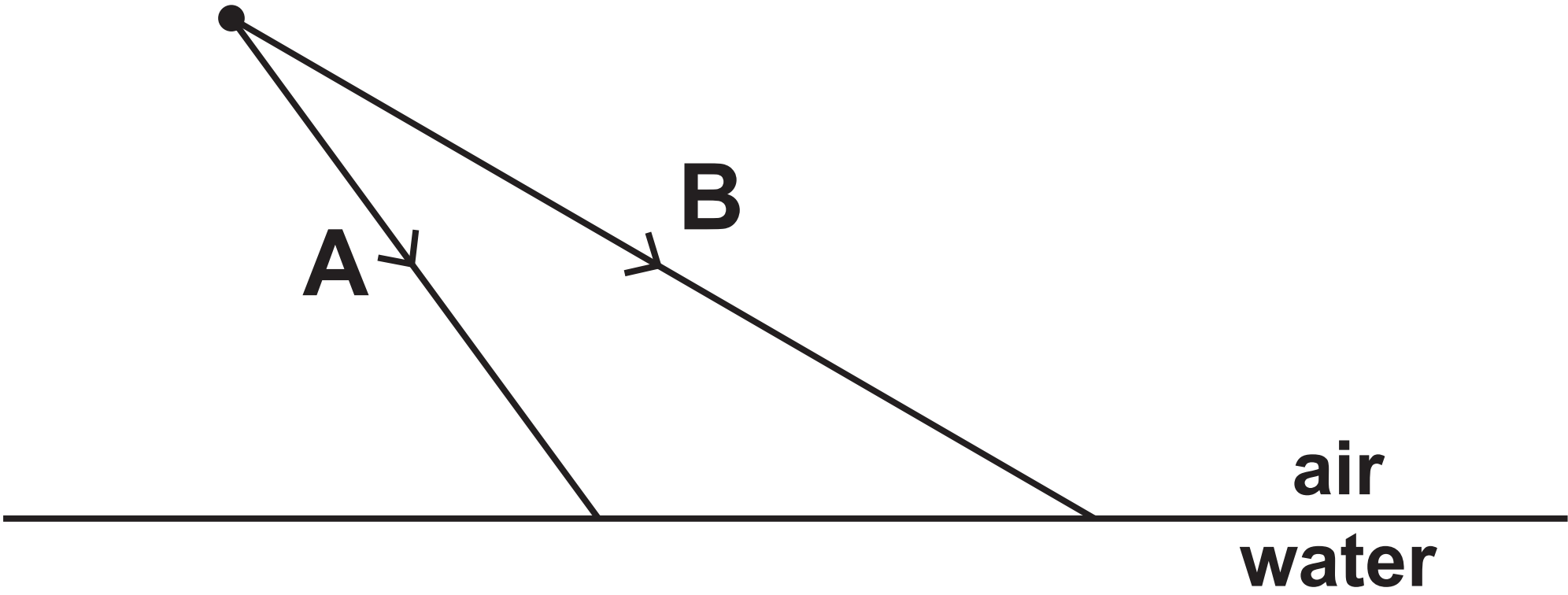
### DIAGRAM 2



Question 8

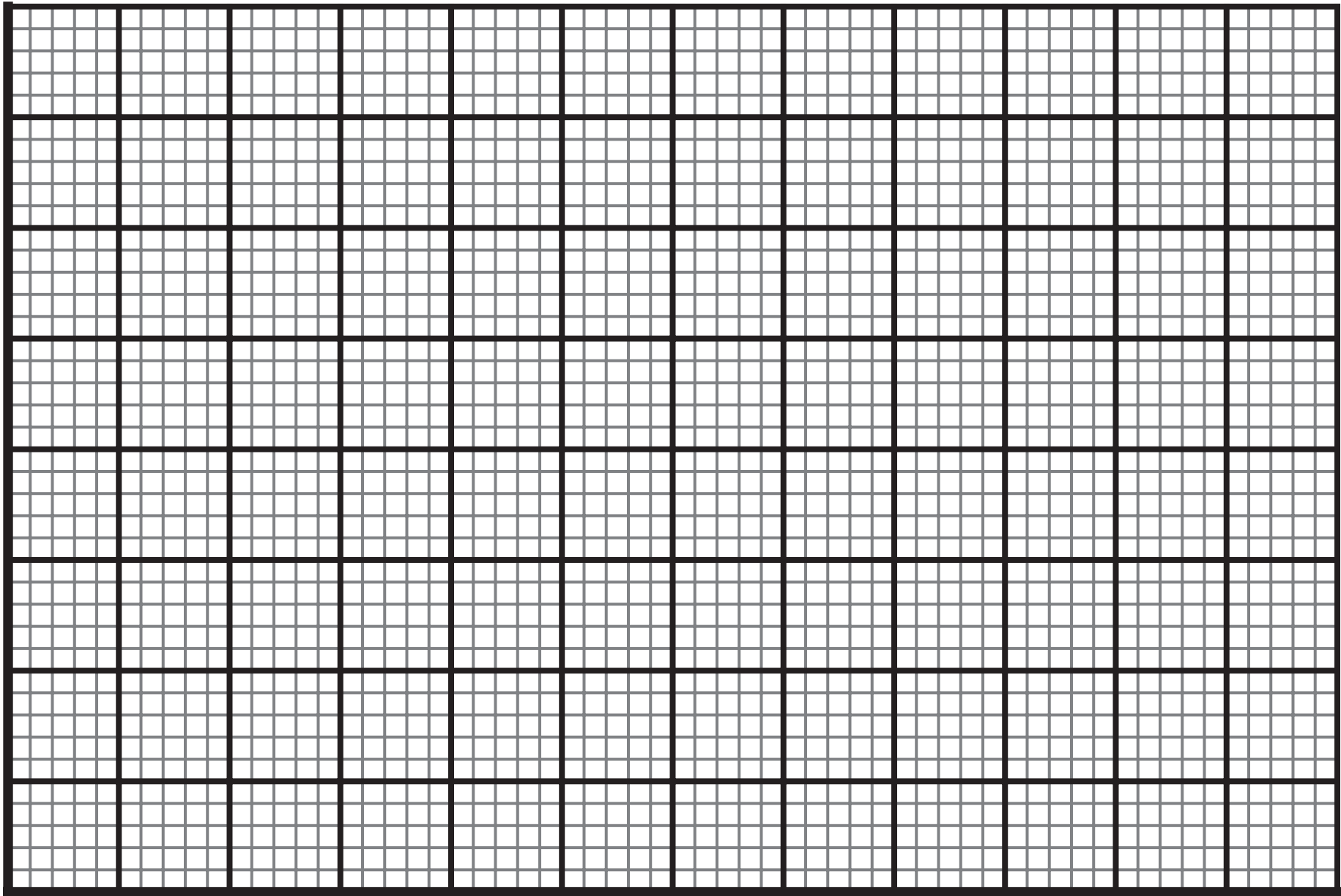
drawn to  
scale

light source



Question 10(c)(ii)

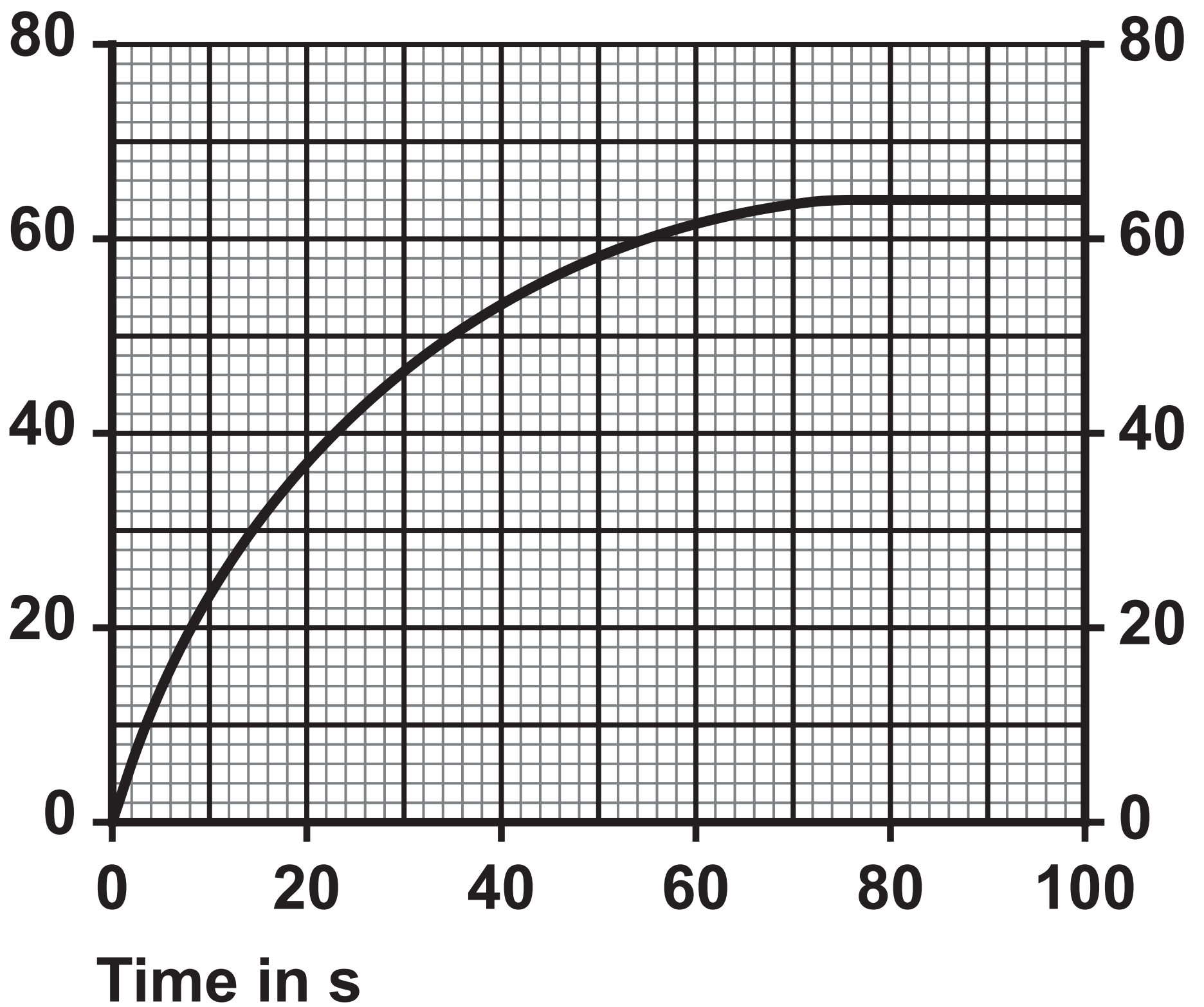
Height (h) in cm



Length (L) in cm

## Question 12

Velocity in m / s



## **Source information**

### **Question 3**

**Source: adapted from © Dmitry Kalinovsky / Shutterstock**